

POLLINATOR GARDEN

A pollinator garden is a cultivated landscape with plants that attract and provide food for pollinators such as butterflies, bees, and hummingbirds. University of Illinois Extension estimates that one of every four mouthfuls of food and drink are due to pollinators, so it is in our best interest to support them.

This guide features a planting plan that creates year-round interest for people and extends the foraging season for pollinators. Another benefit is that the native plant's long root system improves the soil's ability to absorb water. Please note that while only native plants are used in this example, non-natives can also benefit pollinators. For more information, visit the University of Illinois Extension Horticulture website: <http://web.extension.illinois.edu/state/horticulture>.

ADDITIONAL PLANTING OPTIONS



PLANTING ALONG HOUSE



PLANTING ALONG SIDEWALK

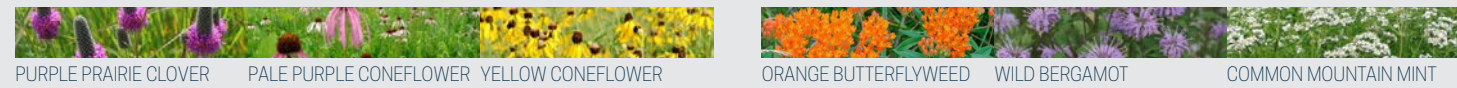
The planting plan is designed so that you can have a pollinator garden tailored to your property's needs. Also, keep in mind that you don't have to install all the plants right away. You can phase them in.

Before you plant, check local municipal or homeowner's association ordinances to ensure your design is in compliance.

If you have more space, you can take the basic planting plan and repeat it, as such.



If you have less space, below are groupings that are suitable for a small bed.



WHERE TO FIND PLANTS AND MORE INFORMATION

Grand Prairie Friends provided the plant list. See their website for availability. The Illinois Native Plant Society webpage lists other sources of plants: <https://ill-inps.org>. For more information about plants, see the University of Illinois Extension Horticulture website: <https://extension.illinois.edu/global/horticulture>

PUT YOUR NATIVE PLANT GARDEN ON THE MAP

You can be part of a network of native plantings by registering your Illinois native plant garden or rain garden. This helps build community and encourage native plant use.

Add your native plant garden to the map: <http://go.illinois.edu/GardenMap>

ACKNOWLEDGMENTS

Funding provided by Illinois Environmental Protection Agency and Illinois-Indiana Sea Grant.

Produced by C. Eliana Brown, University of Illinois Extension.

Researched and designed by Layne Knoche with contributions from Kate Gardiner, University of Illinois Extension.

Edited and reviewed by Chris Enroth and Travis Cleveland, University of Illinois Extension, Kara Salazar, Purdue University, Irene Miles and Joel Davenport, Illinois-Indiana Sea Grant.

POLLINATOR GARDEN

NATIVE PLANTS FOR ATTRACTING POLLINATORS



POLLINATOR GARDEN

NATIVE PLANTS FOR ATTRACTING POLLINATORS

PLANTING PLAN FOR A 6' x 25' BED

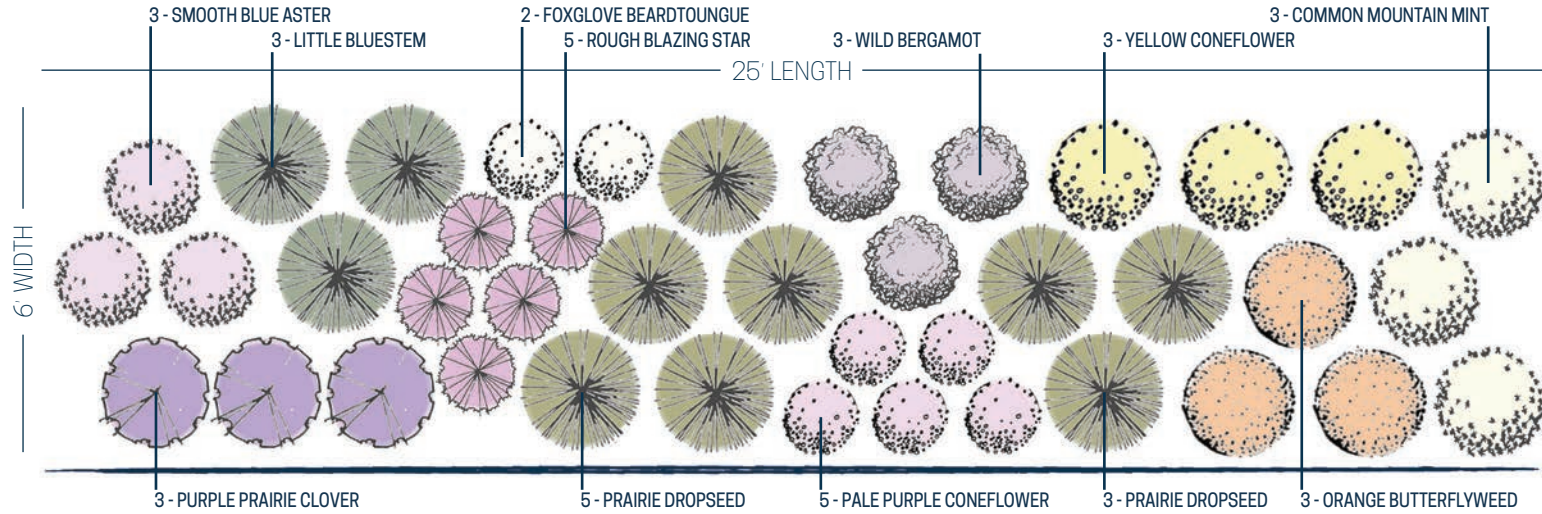
Category Common Name (Total quantity in design)

GROUND COVER: Prairie Dropseed (8)

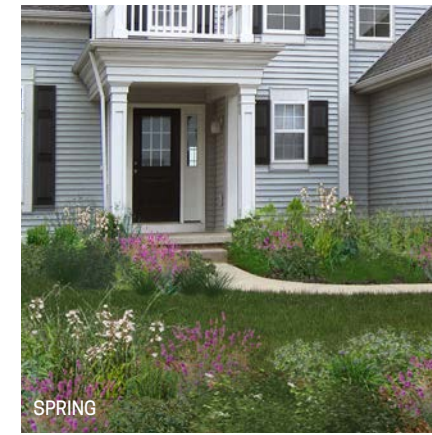
SEASONAL: Foxglove Beardtongue (2), Purple Prairie Clover (3), Orange Butterflyweed (3), Common Mountain Mint (3), Smooth Blue Aster (3)

STRUCTURAL: Pale Purple Coneflower (5), Yellow Coneflower (3), Wild Bergamot (3), Rough Blazing Star (5), Little Bluestem (3)

See the Red Oak Rain Garden Brochure for information related to the Groundcover, Seasonal, and Structural categories.



FOUR SEASON INTEREST



- FOXGLOVE BEARDTONGUE
Penstemon digitalis
- PURPLE PRAIRIE CLOVER
Dalea purpurea



- ORANGE BUTTERFLYWEED
Asclepias tuberosa
- WILD BERGAMOT
Monarda fistulosa
- COMMON MOUNTAIN MINT
Pycnanthemum virginianum
- ROUGH BLAZING STAR
Liatris aspera
- PURPLE PRAIRIE CLOVER
Dalea purpurea
- YELLOW CONEFLOWER
Ratibida pinnata
- PALE PURPLE CONEFLOWER
Echinacea pallida



- PALE PURPLE CONEFLOWER
Echinacea pallida
- LITTLE BLUESTEM
Schizachyrium scoparium
- ROUGH BLAZING STAR
Liatris aspera
- SMOOTH BLUE ASTER
Aster laevis
- COMMON MOUNTAIN MINT
Pycnanthemum virginianum



- PRAIRIE DROPSEED
Sporobolus heterolepis
- LITTLE BLUESTEM
Schizachyrium scoparium
- PALE PURPLE CONEFLOWER
Echinacea pallida
- PURPLE PRAIRIE CLOVER
Dalea purpurea

FORBS ORGANIZED BY BLOOM TIME

SPRING

SUMMER

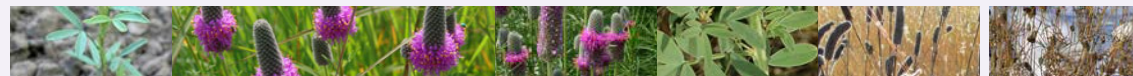
FALL

WINTER

FOXGLOVE BEARDTONGUE
Penstemon digitalis



PURPLE PRAIRIE CLOVER
Dalea purpurea



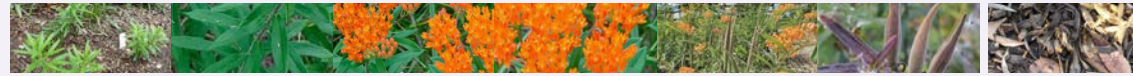
PALE PURPLE CONEFLOWER
Echinacea pallida



YELLOW CONEFLOWER
Ratibida pinnata



ORANGE BUTTERFLYWEED
Asclepias tuberosa



WILD BERGAMOT
Monarda fistulosa



COMMON MOUNTAIN MINT
Pycnanthemum virginianum



ROUGH BLAZING STAR
Liatris aspera

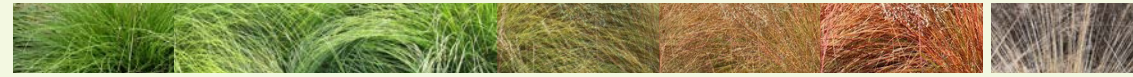


SMOOTH BLUE ASTER
Symphotrichum laevis

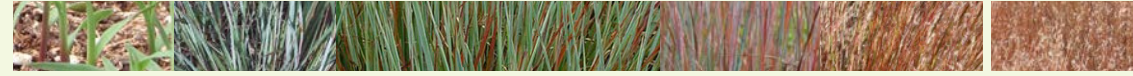


OTHERS ORGANIZED BY HEIGHT

PRAIRIE DROPSEED
Sporobolus heterolepis



LITTLE BLUESTEM
Schizachyrium scoparium



	SUNLIGHT	HEIGHT	MOISTURE	SOIL TYPE	COMMON ECOSYSTEM	ATTRACTIONS	DROUGHT TOLERANCE	SPACING
FOXGLOVE BEARDTONGUE <i>Penstemon digitalis</i>		2'-3'		LOAM	BLACK SOIL PRAIRIE			12-18"
PURPLE PRAIRIE CLOVER <i>Dalea purpurea</i>		1'-3'		TOLERANT	BLACK SOIL PRAIRIE			18-24"
PALE PURPLE CONEFLOWER <i>Echinacea pallida</i>		1'-3'		LOAM, CLAY, ROCKY	BLACK SOIL PRAIRIE			10-18"
YELLOW CONEFLOWER <i>Ratibida pinnata</i>		2'-4'		LOAM, CLAY LOAM	BLACK SOIL PRAIRIE			18-24"
ORANGE BUTTERFLYWEED <i>Asclepias tuberosa</i>		1'-2½'		SANDY, ROCKY, ACIDIC	SAND PRAIRIE			12-36"
WILD BERGAMOT <i>Monarda fistulosa</i>		2½'-4'		LOAM	WET PRAIRIE			24-36"
COMMON MOUNTAIN MINT <i>Pycnanthemum virginianum</i>		1'-3'		TOLERANT	WET PRAIRIE			12-18"
ROUGH BLAZING STAR <i>Liatris aspera</i>		2'-5'		TOLERANT	BLACK SOIL PRAIRIE			10-18"
SMOOTH BLUE ASTER <i>Symphotrichum laevis</i>		2'-4'		LOAM/CLAY	BLACK SOIL PRAIRIE			18-24"
PRAIRIE DROPSEED <i>Sporobolus heterolepis</i>		1'-2'		LOAM, ROCKY	HILL PRAIRIE			24-36"
LITTLE BLUESTEM <i>Schizachyrium scoparium</i>		2'-3'		TOLERANT	HILL PRAIRIE			24-36"

SOURCES

ILLINOIS WILDFLOWERS - <http://www.illinoiswildflowers.info/>
PRAIRIE MOON NURSERY - <https://www.prairiemoon.com/>
GARDENER EXPERIENCE

LEGEND

WET SOIL
 MOIST SOIL
 MESIC SOIL
 PART SUN
 ATTRACTS BEES
 ATTRACTS HUMMINGBIRDS
 ATTRACTS BIRDS
 ATTRACTS A VARIETY OF BUTTERFLIES
 ATTRACTS MONARCH BUTTERFLIES
 ATTRACTS CATERPILLARS
 DROUGHT TOLERANT
 SEMI-DROUGHT TOLERANT
 NOT DROUGHT TOLERANT