

POLLINATOR GARDEN

A pollinator garden is a cultivated landscape with plants that attract and provide food for pollinators such as butterflies, bees, and hummingbirds. University of Illinois Extension estimates that one of every four mouthfuls of food and drink are due to pollinators, so it is in our best interest to support them.

This guide features a planting plan that creates year-round interest for people and extends the foraging season for pollinators. Another benefit is that the native plant’s long root system improves the soil’s ability to absorb water. Please note that while only native plants are used in this example, non-natives can also benefit pollinators. For more information, visit the University of Illinois Extension Horticulture website: <http://web.extension.illinois.edu/state/horticulture>.

ADDITIONAL PLANTING OPTIONS



PLANTING ALONG HOUSE

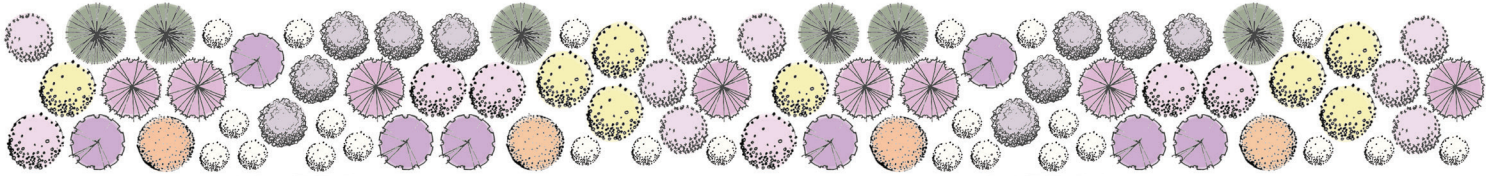


PLANTING ALONG SIDEWALK

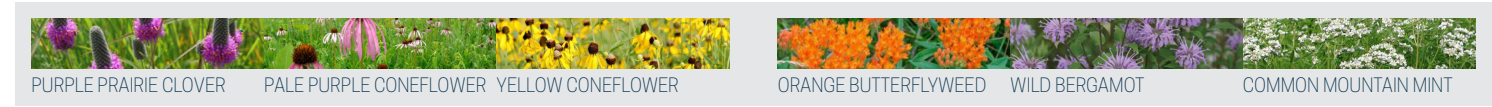
The planting plan is designed so that you can have a pollinator garden tailored to your property’s needs. Also, keep in mind that you don’t have to install all the plants right away. You can phase them in.

Before you plant, check local municipal or homeowner’s association ordinances to ensure your design is in compliance.

If you have more space, you can take the basic planting plan and repeat it, as such.



If you have less space, below are groupings that are suitable for a small bed.



WHERE TO FIND PLANTS AND MORE INFORMATION

Grand Prairie Friends provided the plant list. See their website for availability. The Illinois Native Plant Society webpage lists other sources of plants. For more information about plants, see the University of Illinois Extension Horticulture website.

PUT YOUR NATIVE PLANT GARDEN ON THE MAP

You can be part of a network of native plantings by registering your Illinois native plant garden or rain garden. This helps build community and encourage native plant use.

Add your native plant garden to the map: <http://go.illinois.edu/GardenMap>

ACKNOWLEDGMENTS

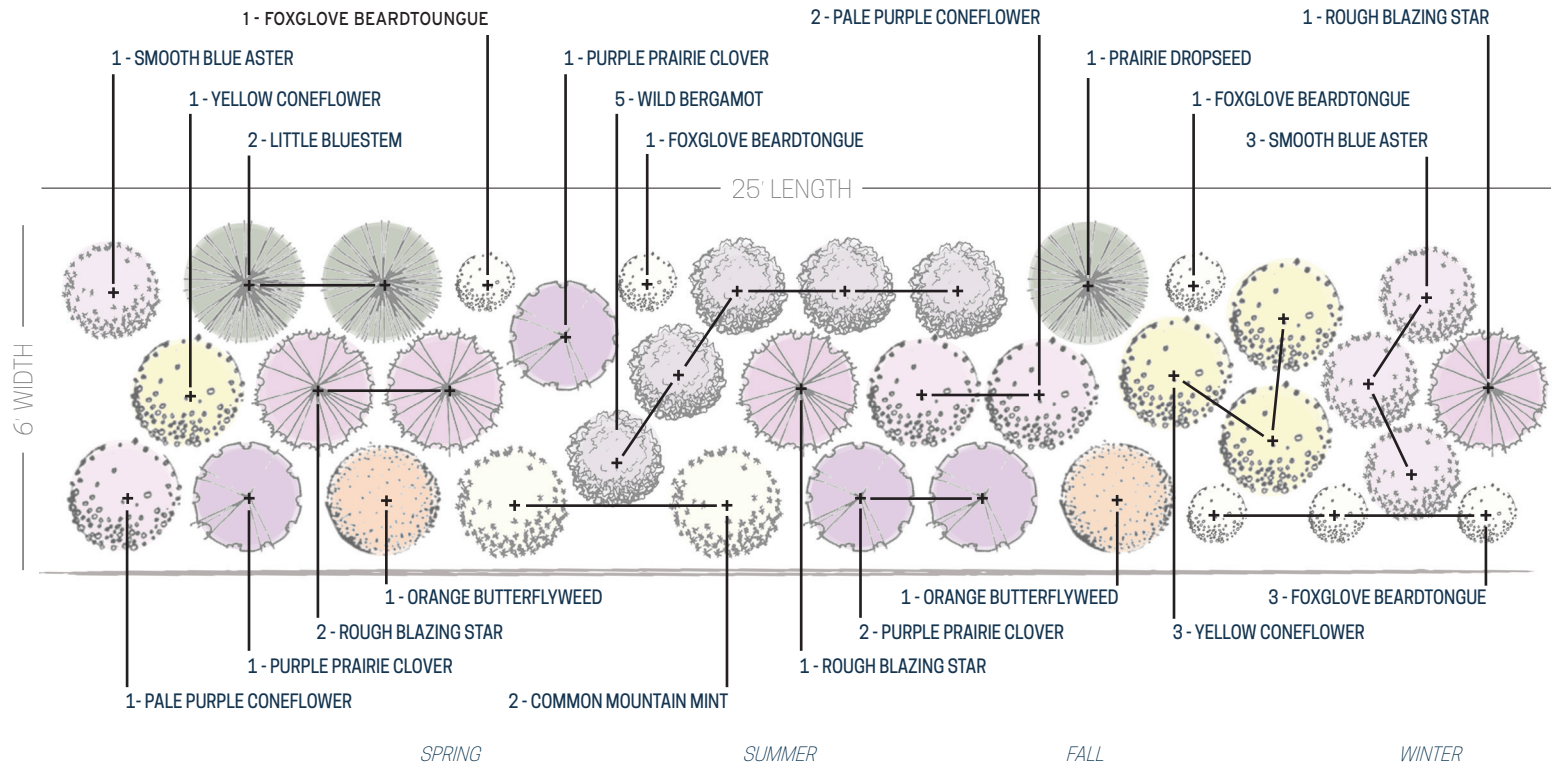
Funding provided by Illinois Environmental Protection Agency and Illinois-Indiana Sea Grant.
Produced by C. Eliana Brown, University of Illinois Extension.
Researched and designed by Layne Knoche with contributions from Kate Gardiner, University of Illinois Extension.
Edited and reviewed by Chris Enroth and Travis Cleveland, University of Illinois Extension, Kara Salazar, Purdue University, Irene Miles and Joel Davenport, Illinois-Indiana Sea Grant.



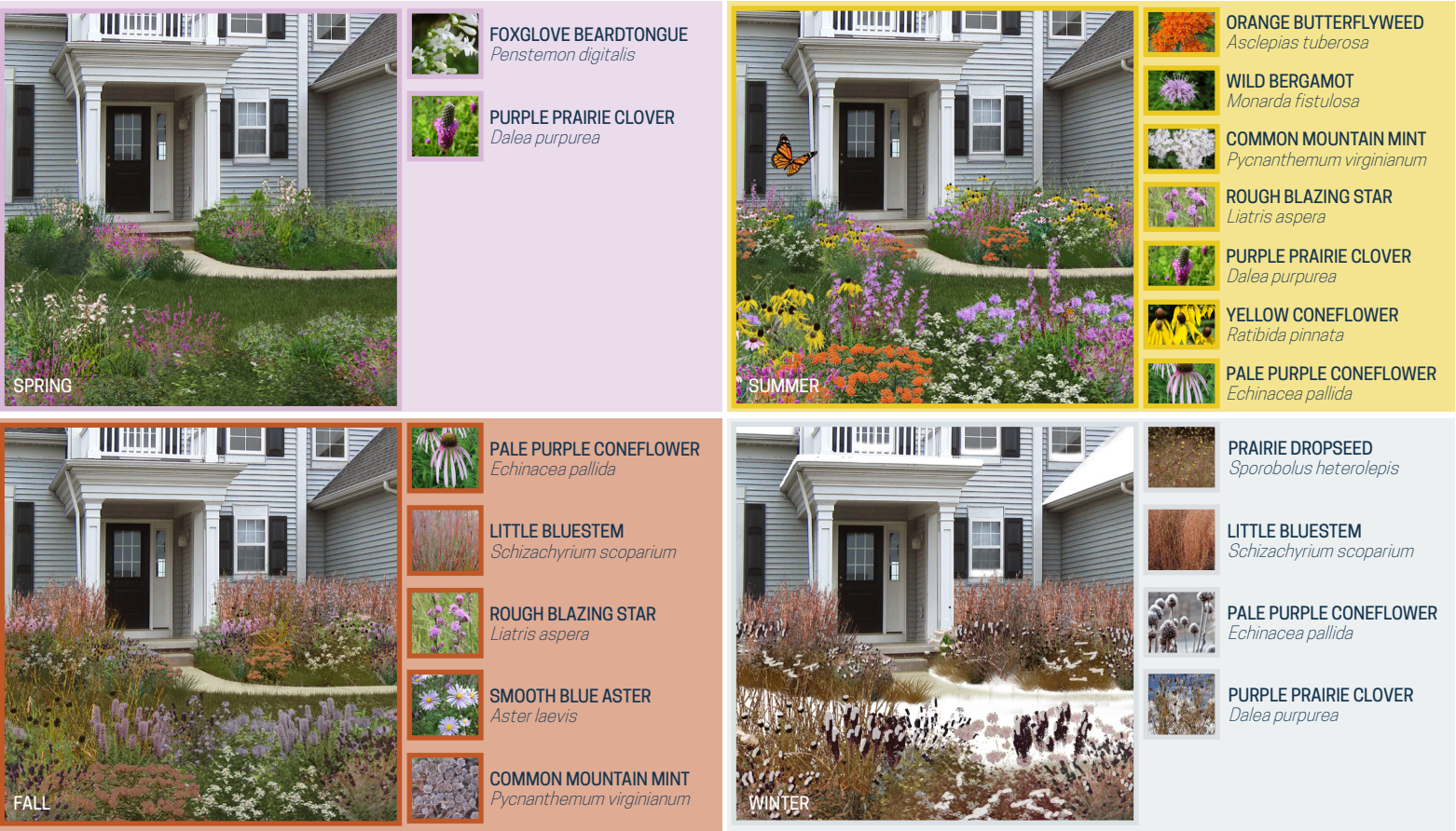
POLLINATOR GARDEN

NATIVE PLANTS FOR ATTRACTING POLLINATORS

PLANTING PLAN



FOUR SEASON INTEREST



FOXGLOVE BEARDTONGUE <i>Penstemon digitalis</i>							2'-3'				LOAM	BLACK SOIL PRAIRIE						12-18"
PURPLE PRAIRIE CLOVER <i>Dalea purpurea</i>							1'-3'				TOLERANT	BLACK SOIL PRAIRIE						18-24"
PALE PURPLE CONEFLOWER <i>Echinacea pallida</i>							1'-3'				LOAM, CLAY, ROCKY	BLACK SOIL PRAIRIE						10-18"
YELLOW CONEFLOWER <i>Ratibida pinnata</i>							2'-4'				LOAM, CLAY LOAM	BLACK SOIL PRAIRIE						18-24"
ORANGE BUTTERFLYWEED <i>Asclepias tuberosa</i>							1'-2½'				SANDY, ROCKY, ACIDIC	SAND PRAIRIE						12-36"
WILD BERGAMOT <i>Monarda fistulosa</i>							2½'-4'				LOAM	WET PRAIRIE						24-36"
COMMON MOUNTAIN MINT <i>Pycnanthemum virginianum</i>							1'-3'				TOLERANT	WET PRAIRIE						12-18"
ROUGH BLAZING STAR <i>Liatris aspera</i>							2'-5'				TOLERANT	BLACK SOIL PRAIRIE						10-18"
SMOOTH BLUE ASTER <i>Symphyotrichum laeve</i>							2'-4'				LOAM/CLAY	BLACK SOIL PRAIRIE						18-24"
PRAIRIE DROPSEED <i>Sporobolus heterolepis</i>							1'-2'				LOAM, ROCKY	HILL PRAIRIE						24-36"
LITTLE BLUESTEM <i>Schizachyrium scoparium</i>							2'-3'				TOLERANT	HILL PRAIRIE						24-36"

SOURCES
ILLINOIS WILDFLOWERS - <http://www.illinoiswildflowers.info/>
PRAIRIE MOON NURSERY - <https://www.prairiemoon.com/>
GARDENER EXPERIENCE

LEGEND

FULL SUN

PART SUN

MOIST SOIL

MESIC SOIL

DRY SOIL

ATTRACTS BEES

ATTRACTS HUMMINGBIRDS

ATTRACTS BIRDS

ATTRACTS A VARIETY OF BUTTERFLIES

ATTRACTS MONARCH BUTTERFLIES

ATTRACTS CATERPILLARS

DROUGHT TOLERANT

SEMI-DROUGHT TOLERANT

NOT DROUGHT TOLERANT