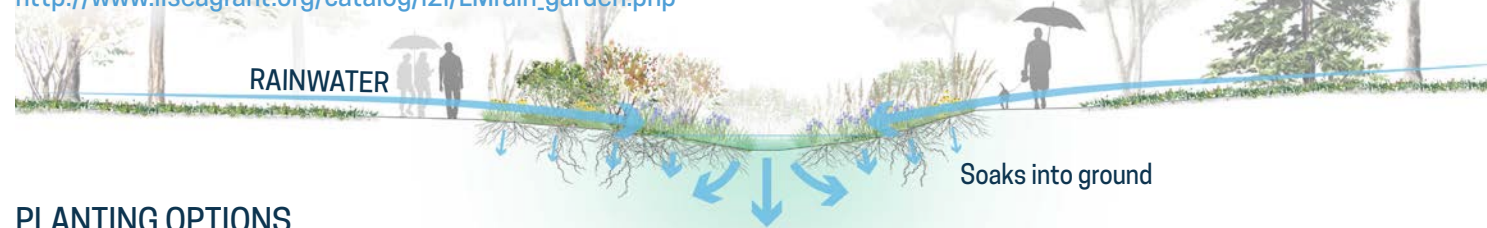


RAIN GARDEN

A rain garden is bowl-shaped to capture and absorb rainfall and snowmelt. These gardens help improve downstream water quality and recharges groundwater. Rain garden plants have to be able to thrive in times of flood and drought, so not every plant is suited for this environment. Lucky for us, some native plants are. This guide provides a suggested rain garden planting plan.

For more information and instructions for building a rain garden, download the Southern Lake Michigan Rain Garden Manual at http://www.iiseagrant.org/catalog/I2/LMrain_garden.php



PLANTING OPTIONS



PLANTING ALONG HOUSE



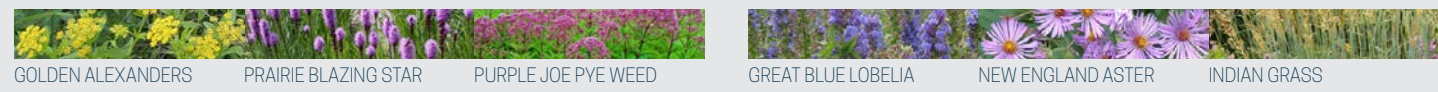
PLANTING ALONG SIDEWALK

Whether you want a large garden or prefer to start out small, customize your rain garden by choosing a variety of plants or a few select favorites. Get creative when planting by phasing in your garden towards your home, planting closer to the sidewalk, or lining the fence in your backyard - just be sure to plant at least 10 ft. from your house (or 20 ft. if there is a basement or heavy clay soil) to prevent water seeping into the foundation. While suggested plant lists and design templates can help, you can personalize your garden however you like, but be sure to check local municipal or HOA ordinances.

If you have more space, you can take the basic planting plan and repeat it, as such.



If you have less space, here are groupings that are suitable for a small bed.



WHERE TO FIND PLANTS AND MORE INFORMATION

Grand Prairie Friends provided the plant list. See their website for availability. The Illinois Native Plant Society webpage lists other sources of plants: <https://ill-inps.org>. For more information about plants, see the University of Illinois Extension Horticulture website: <https://extension.illinois.edu/global/horticulture>

PUT YOUR NATIVE PLANT GARDEN ON THE MAP

You can be part of a network of native plantings by registering your Illinois native plant garden or rain garden. This helps build community and encourage native plant use.

Add your native plant garden to the map: <http://go.illinois.edu/GardenMap>

ACKNOWLEDGMENTS

Funding provided by Illinois Environmental Protection Agency and Illinois-Indiana Sea Grant.

Produced by C. Eliana Brown, University of Illinois Extension.

Researched and designed by Layne Knoche with contributions from Kate Gardiner, University of Illinois Extension.

Edited and reviewed by Chris Enroth and Travis Cleveland, University of Illinois Extension, Kara Salazar, Purdue University, Irene Miles and Joel Davenport, Illinois-Indiana Sea Grant.

RAIN GARDEN

A NATIVE PLANTING GUIDE FOR RAIN GARDEN BEDS



RAIN GARDEN

A NATIVE PLANTING GUIDE FOR RAIN GARDEN BEDS

PLANTING PLAN FOR A 6' x 25' BED

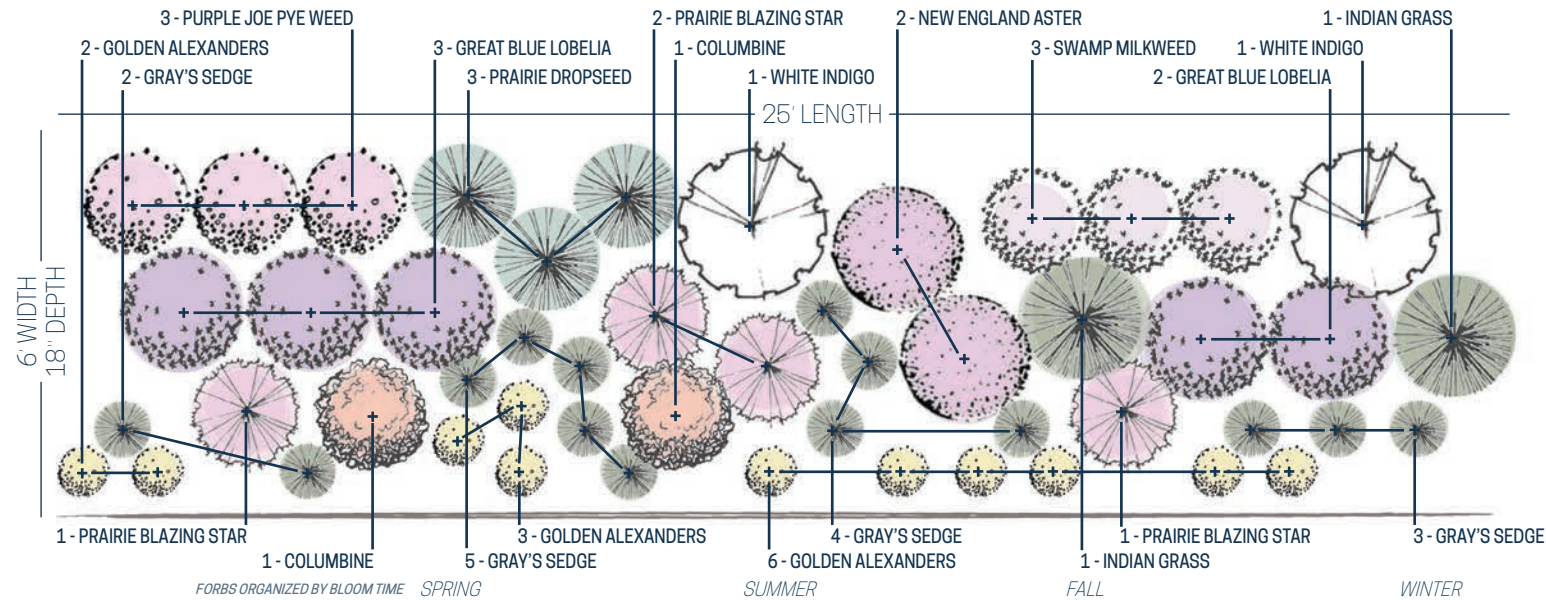
Category Common Name (Total quantity in design)

GROUND COVER: Gray's Sedge (14), Prairie Dropseed (3)

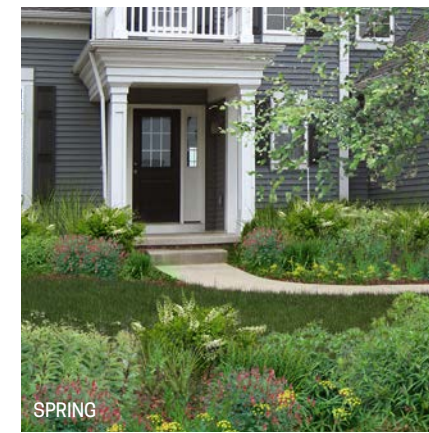
SEASONAL: Columbine (2), Golden Alexanders (11), Swamp Milkweed (3), Great Blue Lobelia (5), New England Aster (2)

STRUCTURAL: White Wild Indigo (2), Purple Joe Pye Weed (3), Prairie Blazing Star (4), Indian Grass (2)

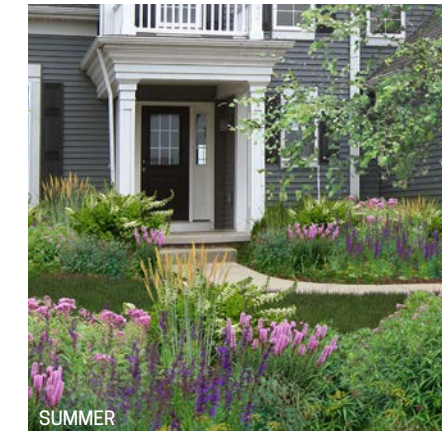
See the Red Oak Rain Garden Brochure for information related to the Groundcover, Seasonal, and Structural categories.



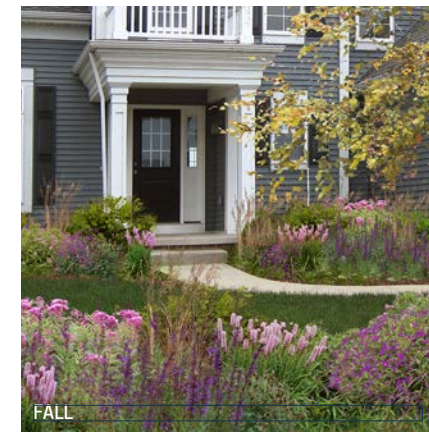
FOUR SEASON INTEREST



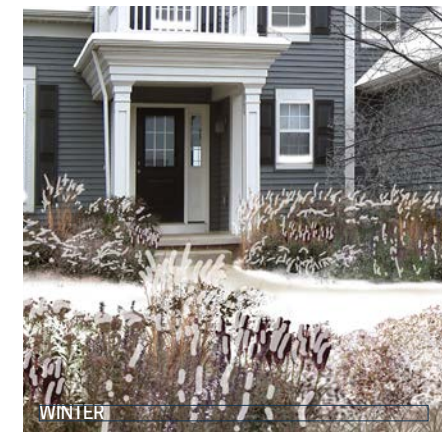
- COLUMBINE**
Aquilegia canadensis
- WHITE WILD INDIGO**
Baptisia alba
- GOLDEN ALEXANDERS**
Zizia aurea



- GREAT BLUE LOBELIA**
Lobelia siphilitica
- PURPLE JOE PYE WEED**
Eutrochium purpureus
- SWAMP MILKWEED**
Asclepias incarnata
- GOLDEN ALEXANDERS**
Zizia aurea
- WHITE INDIGO**
Baptisia alba
- PRAIRIE BLAZING STAR**
Liatris pycnostachya
- INDIAN GRASS**
Sorghastrum nutans



- NEW ENGLAND ASTER**
Aster novae-angliae
- GREAT BLUE LOBELIA**
Lobelia siphilitica
- PURPLE JOE PYE WEED**
Eutrochium purpureus
- INDIAN GRASS**
Sorghastrum nutans



- PRAIRIE DROPSEED**
Sporobolus heterolepis
- INDIAN GRASS**
Sorghastrum nutans
- WHITE INDIGO**
Baptisia alba

	SUNLIGHT	HEIGHT	MOISTURE	SOIL TYPE	COMMON ECOSYSTEM	ATTRACTIONS	DROUGHT TOLERANCE	SPACING
COLUMBINE <i>Aquilegia canadensis</i>		1'-3'		LOAM, SANDY, ROCKY	WOODLAND			10-17"
GOLDEN ALEXANDERS <i>Zizia aurea</i>		1'-2½'		LOAM	WET PRAIRIE			12-24"
WHITE WILD INDIGO <i>Baptisia alba</i>		3'-6'		TOLERANT	BLACK SOIL PRAIRIE			30-42"
SWAMP MILKWEED <i>Asclepias incarnata</i>		3'-5'		LOAM, CLAY, SILT	FLOODPLAIN			18-36"
PURPLE JOE PYE WEED <i>Eutrochium purpureus</i>		3'-7'		SILT/SANDY LOAM	WET PRAIRIE			36-48"
PRAIRIE BLAZING STAR <i>Liatris pycnostachya</i>		2'-4'		LOAM, CLAY	BLACK SOIL PRAIRIE			12-18"
GREAT BLUE LOBELIA <i>Lobelia siphilitica</i>		1'-4'		LOAM	WET PRAIRIE			12-18"
NEW ENGLAND ASTER <i>Aster novae-angliae</i>		2'-4'		LOAM/CLAY	BLACK SOIL PRAIRIE			24-36"
GRAY'S SEDGE <i>Carex grayi</i>		½'-1½'		SANDY/SILT	MOIST WOODLAND			6-10"
PRAIRIE DROPSEED <i>Sporobolus heterolepis</i>		1'-2'		LOAM, ROCKY	HILL PRAIRIE			24-36"
INDIAN GRASS <i>Sorghastrum nutans</i>		3'-7'		TOLERANT	SAVANNAH			24-36"

OTHERS ORGANIZED BY HEIGHT

SOURCES
ILLINOIS WILDFLOWERS - <http://www.illinoiswildflowers.info/>
PRAIRIE MOON NURSERY - <https://www.prairiemoon.com/>
GARDENER EXPERIENCE

LEGEND
 PART SUN
 SHADE

WET SOIL
 MOIST SOIL
 MESIC SOIL

ATTRACTS BEES
 ATTRACTS HUMMINGBIRDS
 ATTRACTS BIRDS

ATTRACTS A VARIETY OF BUTTERFLIES
 ATTRACTS MONARCH BUTTERFLIES
 ATTRACTS CATERPILLARS

DROUGHT TOLERANT
 SEMI-DROUGHT TOLERANT
 NOT DROUGHT TOLERANT