

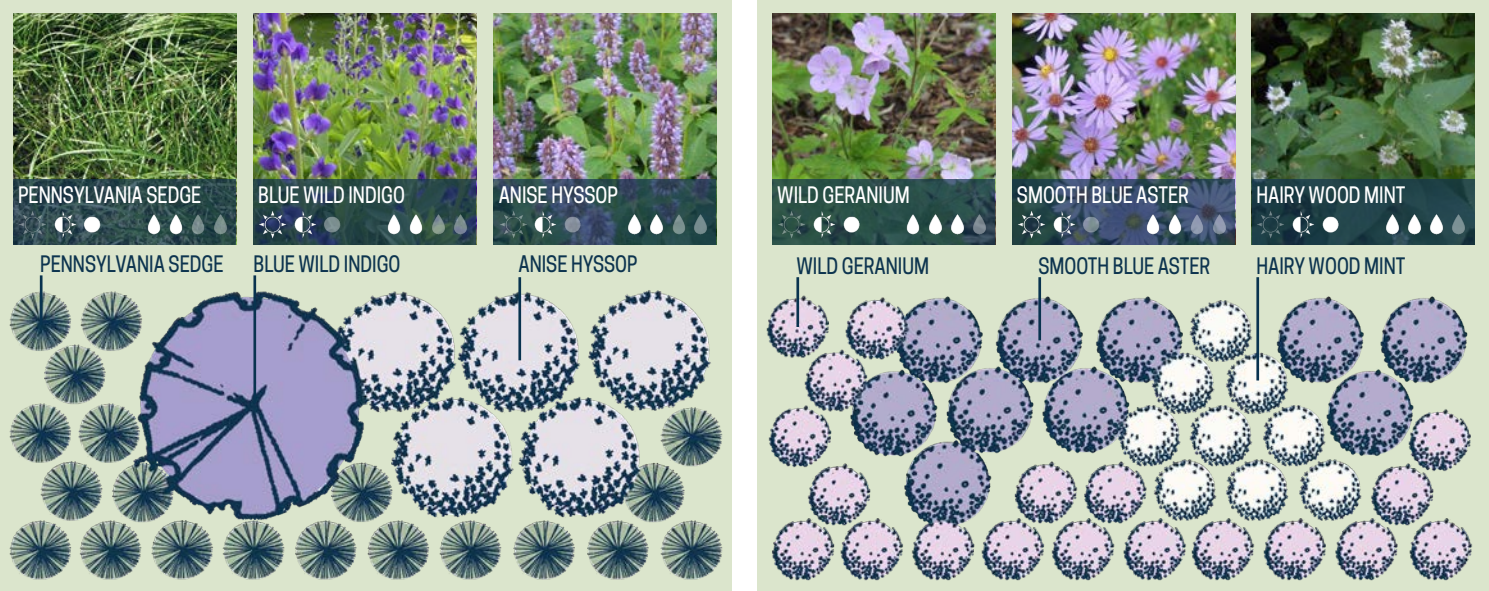
WOODLAND BORDER GARDEN

NATIVE ILLINOIS PLANTS FOR PARTLY SHADED GARDENS

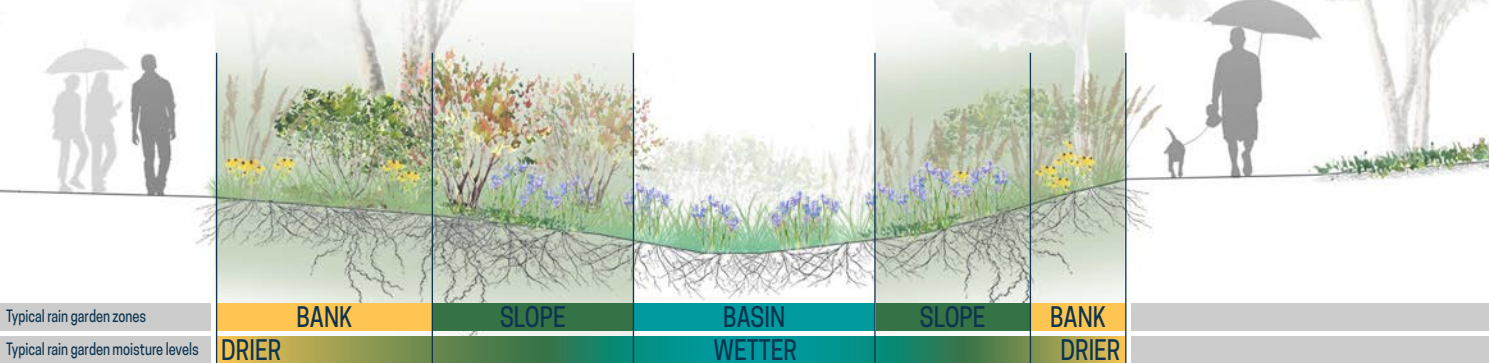
INSPIRED BY THE RED OAK RAIN GARDEN

ADDITIONAL PLANTING OPTIONS

SPACING OPTIONS: If you have more space, duplicate the planting plan located on the inside of this brochure. For less space, consider these two smaller options for 4' x 10' Woodland Border Garden beds:



RAIN GARDEN OPTIONS: While the plants in this brochure are all shade- and part-shade loving species, they prefer a variety of moisture levels. For placement in a rain garden, they are best suited for slopes and higher banks. See the cross-section of a typical rain garden for recommended locations.



WHERE TO FIND PLANTS AND MORE INFORMATION

The plant palette is inspired by the Red Oak Rain Garden: redoakraingarden.org. The Illinois Native Plant Society webpage lists sources of native plants: illinoisplants.org. For more information about plants, see the University of Illinois Extension Horticulture website.

PUT YOUR NATIVE PLANT GARDEN ON THE MAP

You can be part of a network of native plantings by registering your Illinois native plant garden or rain garden. This helps build community and encourage native plant use. Add your native plant garden to the map: go.illinois.edu/GardenMap.

ACKNOWLEDGMENTS

Funding provided by Illinois Environmental Protection Agency and Illinois-Indiana Sea Grant.
Produced by C. Eliana Brown, University of Illinois Extension.
Researched and designed by Layne Knoche with contributions from Kate Gardiner, University of Illinois Extension.
Edited by Irene Miles, Hope Charters, Kara Salazar and Joel Davenport, Illinois-Indiana Sea Grant, Chris Enroth and Erin Garrett, University of Illinois Extension, Heidi Leuszler, Parkland College, and Karen Folk, East Central Illinois Master Naturalists.
IISG20-RCE-BRC-033



WOODLAND BORDER GARDEN

NATIVE ILLINOIS PLANTS FOR PARTLY SHADED GARDENS

PLANTING PLAN FOR A 6' x 25' BED

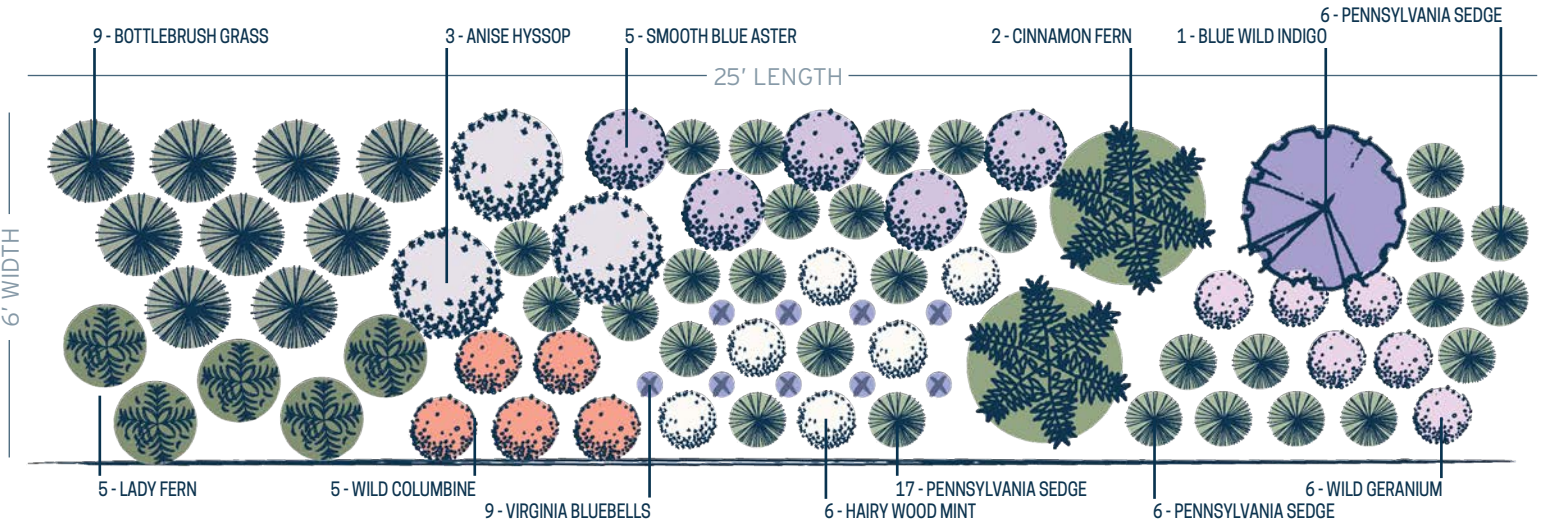
Category Common Name (Total quantity in design)

GROUNDCOVER: Pennsylvania Sedge (29), Wild Geranium (6), Lady Fern (5)

SEASONAL: Virginia Bluebells (9), Wild Columbine (5), Hairy Wood Mint (6), Smooth Blue Aster (5), Ansie Hyssop (3)

STRUCTURAL: Blue Wild Indigo (1), Bottlebrush Grass (9), Cinnamon Fern (2)

See the Red Oak Rain Garden Brochure for information related to the Groundcover, Seasonal, and Structural categories.



FORBS ORGANIZED BY BLOOM TIME

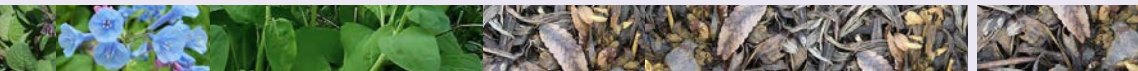
SPRING

SUMMER

FALL

WINTER

VIRGINIA BLUEBELLS
Mertensia virginica



WILD COLUMBINE
Aquilegia canadensis



WILD GERANIUM
Geranium maculatum



HAIRY WOOD MINT
Blephilia hirsuta



BLUE WILD INDIGO
Baptisia australis



ANISE HYSSOP
Agastache foeniculum



SMOOTH BLUE ASTER
Symphyotrichum laeve



OTHERS ORGANIZED BY HEIGHT

PENNSYLVANIA SEDGE
Carex pennsylvanica



BOTTLEBRUSH GRASS
Elymus hystrix



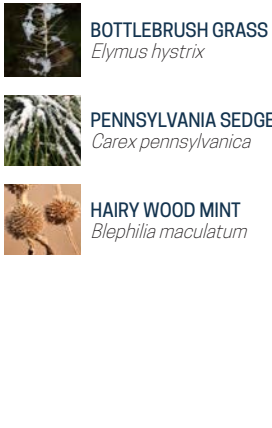
LADY FERN
Athyrium filix-femina



CINNAMON FERN
Osmunda cinnamomea



FOUR SEASON INTEREST



SUNLIGHT	HEIGHT	SPACING	MOISTURE	SOIL TYPE	COMMON ECOSYSTEM	ATTRACTIONS	DROUGHT TOLERANCE
	1'-2½'	1'-1½'		LOAM	WOODLAND		
	2'-3'	1'-1½'		SANDY, ROCKY	WOODLAND		
	1'-1½'	1'-1½'		LOAM	WOODLAND		
	1'-3'	¾'-1½'		LOAM	WOODLAND OPENING		
	3'-4'	3'-4'		ROCKY, LOAM	WOODLAND OPENING		
	2½'-3'	1½'-3'		LOAM, CLAY-LOAM	WOODLAND OPENING		
	2'-4'	2'-3'		LOAM, CLAY	WOODLAND BORDER		
	½'-1'	1'-2'		SANDY LOAM	WOODLAND		
	2½'-5'	1'-1½'		LOAM	WOODLAND		
	1'-3'	1'-2½'		LOAM	WOODLAND		
	2'-4'	2'-3'		SANDY, ACIDIC	LOW WOODLAND		

Some of these species freely self-seed if seed heads are left standing post-bloom. If this is an issue, remove spent flowers and seed heads. Some plants may migrate from one location to another over time. If this is not desired, transplant them back to preferred locations.

SOURCES
ILLINOIS WILDFLOWERS - illinoiswildflowers.info
PRAIRIE MOON NURSERY - prairiemoon.com
GARDENER EXPERIENCE

LEGEND

PART SUN
 SHADE

WET SOIL
 MOIST SOIL
 MESIC SOIL

ATTRACTS BEES
 ATTRACTS HUMMINGBIRDS
 ATTRACTS BIRDS

ATTRACTS A VARIETY OF BUTTERFLIES
 ATTRACTS MONARCH BUTTERFLIES
 CATERPILLAR HOST PLANT

DROUGHT TOLERANT
 SEMI-DROUGHT TOLERANT
 NOT DROUGHT TOLERANT