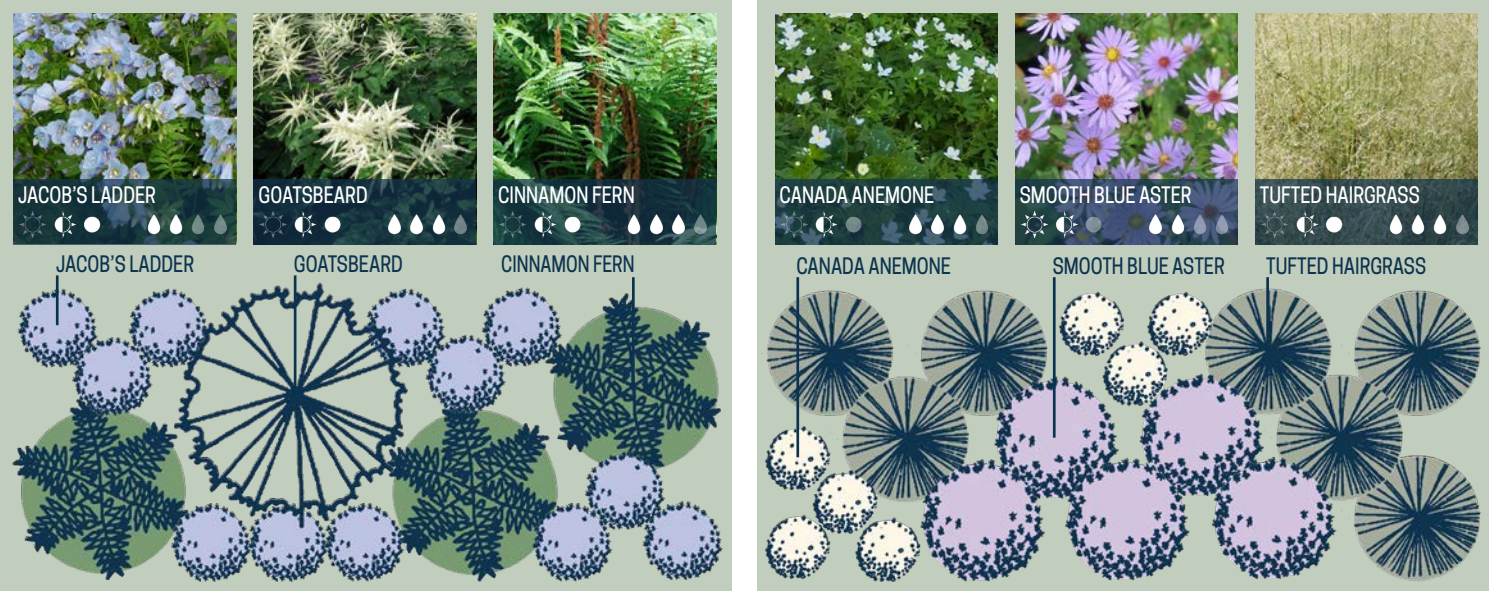


WOODLAND GARDEN

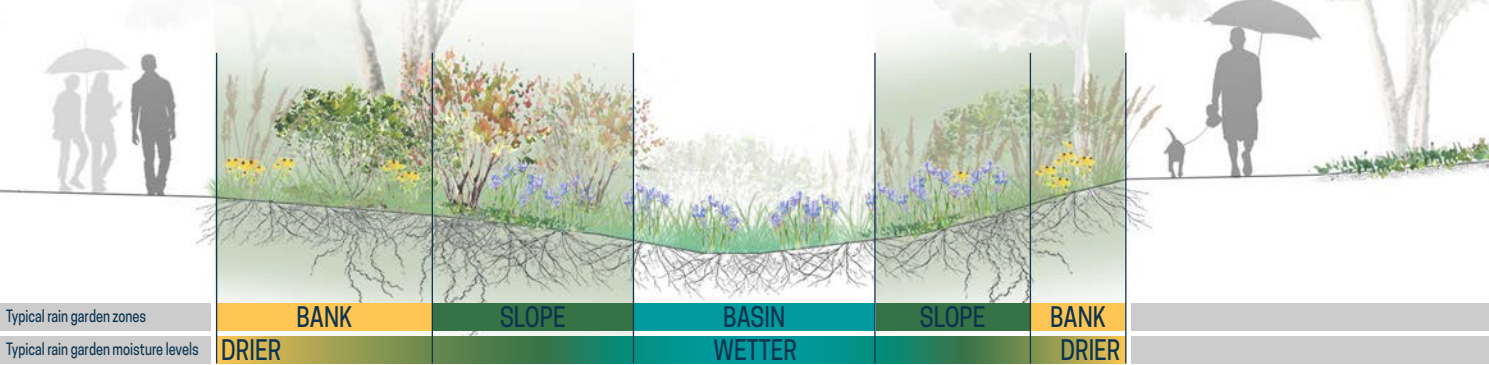
Shaded areas of the yard can be challenging places for grass to grow. Luckily, Illinois has dozens of native plant species that thrive in shade. Instead of a traditional lawn, consider shade-loving groundcovers, like sedges and ferns. For interest, add other shade plants that are taller and bloom. This guide features a planting plan focused on natives typically found in Illinois woodlands. The plan creates year-round interest for homeowners and extends the foraging season for pollinators. Additionally, native plants help soak up rainfall and can be used in rain gardens. For more information, visit the University of Illinois Extension Horticulture website: [extension.illinois.edu/global/horticulture](https://extension.illinois.edu/global/horticulture).

ADDITIONAL PLANTING OPTIONS

SPACING OPTIONS: If you have more space, duplicate the planting plan located on the inside of this brochure. For less space, consider these two smaller options for 4' x 10' Woodland Garden beds:



RAIN GARDEN OPTIONS: While the plants in this brochure are all shade-loving species, they prefer a variety of moisture levels. For placement in a shaded rain garden, they are best suited for slopes and higher banks. See the cross-section of a typical rain garden for recommended locations.



WHERE TO FIND PLANTS AND MORE INFORMATION

The plant palette is inspired by the Red Oak Rain Garden: [redoakraingarden.org](https://redoakraingarden.org). The Illinois Native Plant Society webpage lists sources of native plants: [illinoisplants.org](https://illinoisplants.org). For more information about plants, see the University of Illinois Extension Horticulture website.

PUT YOUR NATIVE PLANT GARDEN ON THE MAP

You can be part of a network of native plantings by registering your Illinois native plant garden or rain garden. This helps build community and encourage native plant use. Add your native plant garden to the map: [go.illinois.edu/GardenMap](https://go.illinois.edu/GardenMap).

ACKNOWLEDGMENTS

Funding provided by Illinois Environmental Protection Agency and Illinois-Indiana Sea Grant.  
Produced by C. Eliana Brown, University of Illinois Extension.  
Researched and designed by Layne Knoche with contributions from Kate Gardiner, University of Illinois Extension.  
Edited by Irene Miles, Hope Charters, Kara Salazar and Joel Davenport, Illinois-Indiana Sea Grant, Chris Enroth and Erin Garrett, University of Illinois Extension, Heidi Leuszler, Parkland College, and Karen Folk, East Central Illinois Master Naturalists.  
IISG20-RCE-BRC-034



# WOODLAND GARDEN

## NATIVE ILLINOIS PLANTS FOR SHADED GARDENS

PLANTING PLAN FOR A 6' x 25' BED

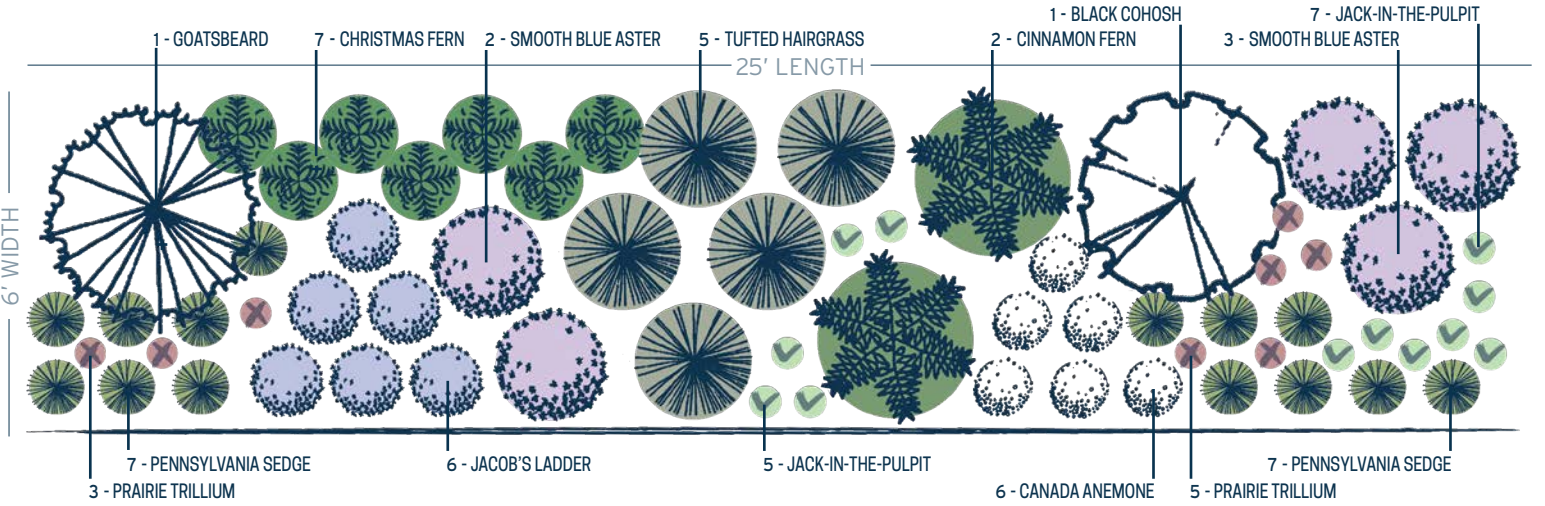
Category Common Name (Total quantity in design)

GROUNDCOVER: Pennsylvania Sedge (17), Jacob's Ladder (6), Tufted Hairgrass (5), Christmas Fern (7)

SEASONAL: Prairie Trillium (9), Jack-in-the-Pulpit (12), Poke Milkweed (3), Smooth Blue Aster (5)

STRUCTURAL: Goatsbeard (1), Black Cohosh (1), Cinnamon Fern (2)

See the Red Oak Rain Garden Brochure for information related to the Groundcover, Seasonal, and Structural categories.



### FOUR SEASON INTEREST



FORBS ORGANIZED BY BLOOM TIME				SPRING				SUMMER				FALL				WINTER				SUNLIGHT	HEIGHT	SPACING	MOISTURE	SOIL TYPE	COMMON ECOSYSTEM	ATTRACTIONS			DROUGHT TOLERANCE		
JACK-IN-THE-PULPIT <i>Arisaema triphyllum</i>																						1'-2'	1'-1½'			LOAM	WOODLAND				
PRAIRIE TRILLIUM <i>Trillium recurvatum</i>																						1-1½'	¾'-1'			LOAM	WOODLAND				
JACOB'S LADDER <i>Polemonium reptans</i>																						1'-3'	1'-1½'			LOAM	WOODLAND				
CANADA ANEMONE <i>Anemone canadensis</i>																						1'-2'	1'-2'			LOAM	WOODLAND OPENING				
GOATSBEARD <i>Aruncus dioicus</i>																						4'-6'	2'-4'			LOAM	WET WOODLAND				
BLACK COHOSH <i>Actaea racemosa</i>																						3'-7'	2'-4'			LOAM	WOODLAND				
SMOOTH BLUE ASTER <i>Symphyotrichum laeve</i>																						2'-4'	2'-3'			LOAM, CLAY	WOODLAND BORDER				
OTHERS ORGANIZED BY HEIGHT																															
PENNSYLVANIA SEDGE <i>Carex pensylvanica</i>																						½'-1'	1'-2'			SANDY LOAM	WOODLAND				
CHRISTMAS FERN <i>Polystichum acrostichoides</i>																						1½'-2½'	1'-2'			LOAM, ROCKY	WOODLAND				
TUFTED HAIRGRASS <i>Deschampsia caespitosa</i>																						2'-3'	1'-2'			LOAM	WOODLAND				
CINNAMON FERN <i>Osmunda cinnamomea</i>																						2'-4'	2'-3'			SANDY, ACIDIC	LOW WOODLAND				