



WITH YOUR PHONE'S CAMERA, SCAN FOR:



More Pollinator
Plants



Full Version of
this Brochure



All RORG
Resources

FULL SUN POLLINATOR GARDEN

PLANTS FOR THE HOME LANDSCAPE

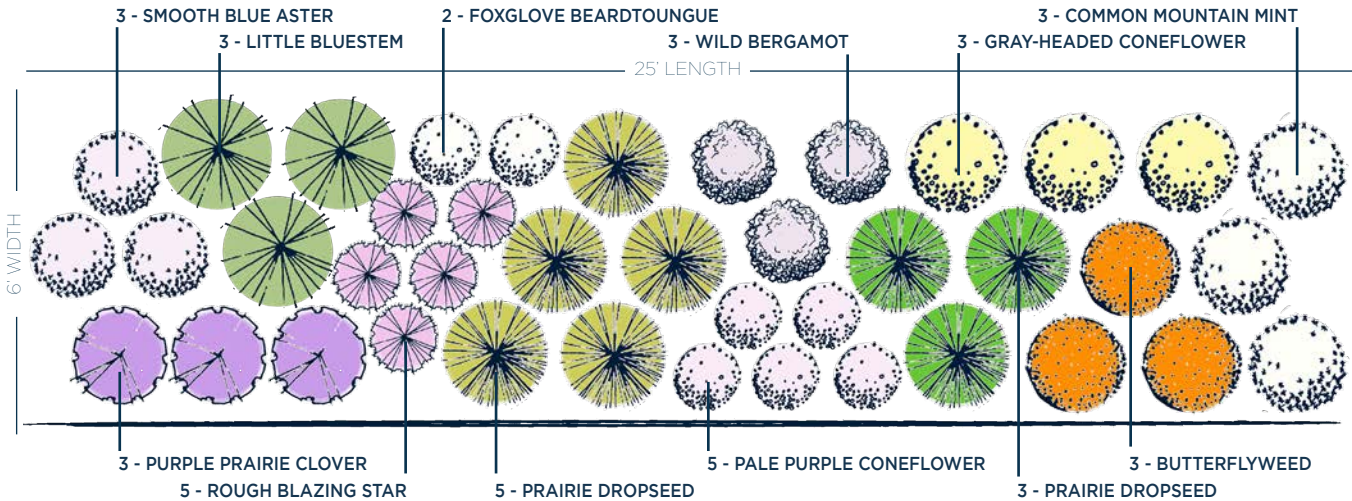
Inspired by the Red Oak Rain Garden



Illinois Extension

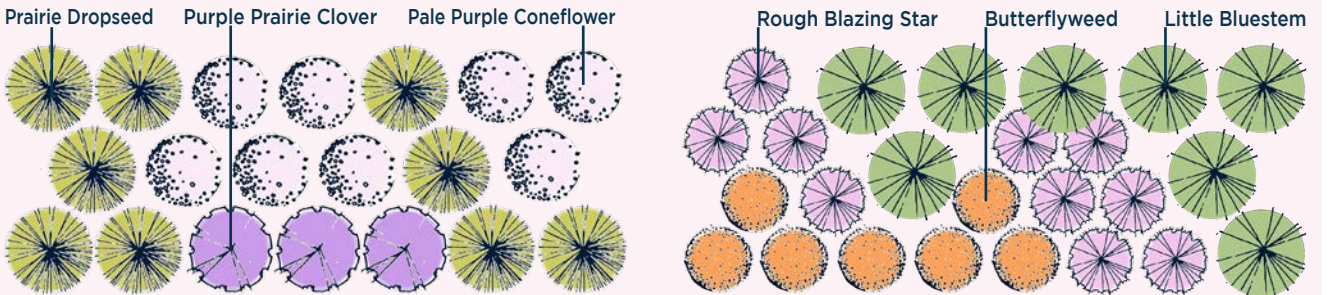
UNIVERSITY OF ILLINOIS URBANA-CHAMPAIGN

FULL SUN POLLINATOR GARDEN PLANTING PLAN (6ft X 25ft)



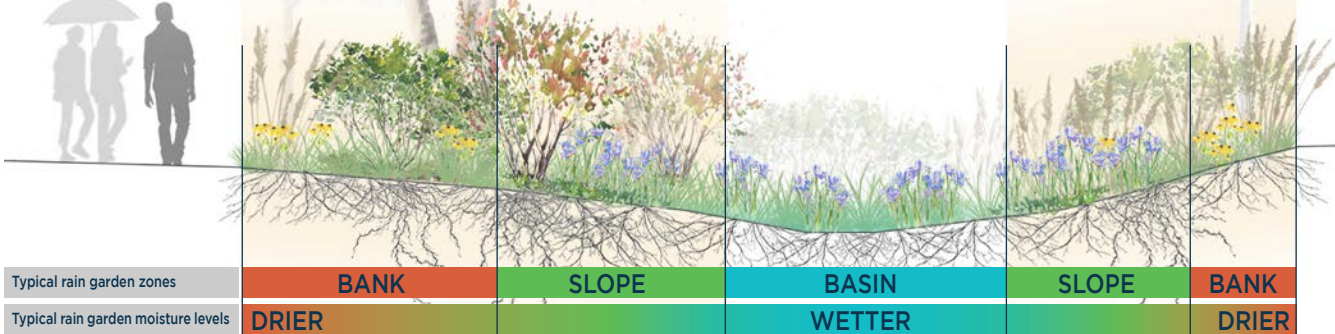
ADDITIONAL PLANTING OPTIONS

SPACING OPTIONS: If you have more space, duplicate the planting plan above. For less space, consider these two smaller options for 4ft x 10ft Pollinator Garden beds:



RAIN GARDEN OPTIONS

While the plants in this brochure are all sun-loving species, they prefer a variety of moisture levels. For placement in a rain garden, they are best suited for slopes and higher banks. See the cross-section of a typical rain garden for recommended locations.



FULL SUN POLLINATOR GARDEN

A pollinator garden is a cultivated landscape with plants that attract and provide food for pollinators such as butterflies, bees, and hummingbirds. University of Illinois Extension estimates that one of every four mouthfuls of food and drink are due to pollinators, so it is in our best interest to support them. This guide features a planting plan that creates year-round interest for people and extends the foraging season for pollinators. Another benefit is that the native plant's long root system improves the soil's ability to absorb water. Please note that while only native plants are used in this example, non-natives can also benefit pollinators. For more information, visit the University of Illinois Extension Horticulture website: extension.illinois.edu/global/horticulture.

FINDING PLANTS & MORE INFORMATION

The plant palette is inspired by the Red Oak Rain Garden: RedOakRainGarden.org. The Illinois Native Plant Society webpage lists sources of native plants: illinoisplants.org. For more information about plants, see the University of Illinois Extension Horticulture website.

PUT YOUR GARDEN ON THE MAP

You can be part of a network of native plantings by registering your Illinois native plant garden or rain garden. This helps build community and encourage native plant use. Add your native plant garden to the map: go.illinois.edu/GardenMap.

ACKNOWLEDGMENTS

Funding provided by the Illinois Environmental Protection Agency and Illinois-Indiana Sea Grant.
Produced by C. Eliana Brown, University of Illinois Extension.
Researched and designed by Layne Knoche with contributions from Kate Gardiner, University of Illinois Extension.
Edited and reviewed by Chris Enroth and Travis Cleveland, University of Illinois Extension, Kara Salazar, Purdue University, Irene Miles and Joel Davenport, Illinois-Indiana Sea Grant.

